

Residential Recycling in Butler County



Information on Butler County's Recycling Program for Residents

**Butler County
Department of
Recycling &
Waste Management**

**PO Box 1208
124 W. Diamond St.
Butler, PA 16003**

**Phone:
724.284.5305
Fax: 724.284.5315
Email & Web:
skelly@co.butler.pa.us
www.recyclebutler.us**

Who Can (and Should) Recycle

Curbside recycling is available to all residents in Butler County's 57 municipalities. Ordinance 9201 requires all residential waste haulers operating in Butler County to also pick up unlimited amounts of curbside recycling from their customers. Also, waste haulers are not permitted to

give a discount to anyone not recycling. Every waste hauler offers different levels of waste collection service for households producing different amounts of waste. Just like any other public service, it wouldn't be fair for a family producing one bag of waste per week to pay the same as one producing four bags per week. If you recycle and can divert more to your recycling bin, then you can choose a lower (smaller amount) waste service and possibly save some money!

Almost all of Butler County's municipalities have voluntarily passed Ordinances setting standards for the collection of recyclables and requiring their residents, businesses and institutions to recycle. Check with your municipality to get specifics about your recycling ordinance.

In Butler County, recycling collection has progressed with most haulers from commingled recycling to single stream recycling and is now available county-wide. This is the collection of most recyclables (paper, junk mail, cardboard, all glass, all cans, most plastics) in one bin, mixed together. Check with your hauler to get specifics on exactly what can be placed in your recycling bin.

Yard Waste

Some municipalities in Butler County also offer a spring and/or fall curbside leaf pickup or access to a municipal leaf & yard waste drop-off site. Call your municipality to find out if these services are offered.

Yard waste, including grass clippings can not be placed curbside for waste collection. They should be composted on your property, taken to a local compost site, or you can call your waste hauler to see if they have their own compost site and can pick up for you. For more information, call the Butler County Department of Recycling & Waste Mgt.

"Hard to Recycle" Items:

Most households have large bulky items or unusual things that can be recycled or re-used but can't be placed curbside for pickup unless you inform your waste hauler beforehand. For items such as appliances,



electronics, useable building materials, automotive fluids, tires, etc. please call the Butler County Dept. of Recycling & Waste Mgt. for more information on places where these types of items can be taken.



Hazardous Waste In Your Home:

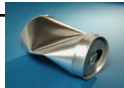
For items such as solvents, paint, insecticides, batteries, cleaning chemicals, pesticides, pool chemicals, etc., Butler County conducts multiple hazardous waste and electronics collections each year for Butler County residents at one location. Check our web site at **www.recyclebutler.us** or call **724.284.5305** for more information. *In addition, the SW PA Household Hazardous Waste Task Force holds hhw collections throughout our corner of the state each year that are open to any resident of the region. For more information, check out the web site www.swpahhw.org or call (412) 431-4449 ext. 213.*

Close the Loop!

Just as important as recycling is buying recycled products made from what was collected. There is a wide variety of recycled products on the market at comparable and often lower prices than standard products. In the past, these products were considered inferior but this is no longer true due to advances in the technologies used to create these products. In buying recycled products you are creating jobs in the industry, reducing greenhouse gases and saving precious natural resources.

Why Recycle?

- Provide industry with an environmentally preferred source of raw materials
- Conserve Natural Resources
- Reduce Greenhouse Gas Emissions
- Save Energy
- Reduce Emissions of Air & Water Pollutants



Recycling Means Business in PA

Recycling and Reuse Establishments = 3,803
 Recycling and Reuse Employment = 52,316 jobs
 Annual Sales Receipts..... \$ 20.6 billion
 Annual Payroll.....\$2.2 billion

For More Information

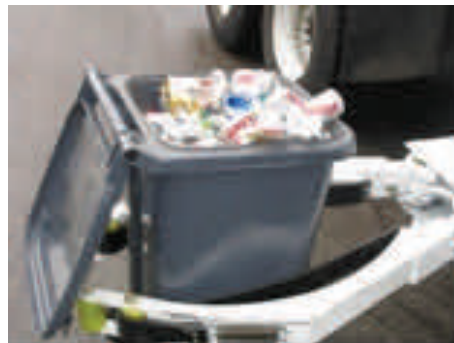
Pennsylvania Department of Environmental Protection: www.depweb.state.pa.us

*Professional Recyclers of PA:
www.proprecycles.org*

Earth 911: www.earth911.org

Use Less Stuff Report: www.use-less-stuff.com/

Freecycle: www.freecycle.org (give and get all kinds of free items)



Please Note: You should always call your waste / recycling hauler if you have any questions about curbside recycling.

Board of Butler County Commissioners

Leslie A. Osche, Chairman
 Kimberly D. Geyer, Vice-Chairman
 Kevin E. Boozel, Secretary